

# System Architect®

## *Market-Leading Enterprise Architecture Tool*

### Highlights

- Enables you to build views of the architecture across the business, data, application, and technology domains
- Provides the ability to baseline the current architecture, build target architectures, and identify gaps to support business transformation
- Offers rich, easy-to-use reporting and analytical features, including visual reporting and impact analysis to support decision-making
- Helps you evaluate the architecture of your systems and conduct capability analysis & planning over time
- Supports multiple modeling standards in one repository to address your enterprise
- Support for latest industry standard frameworks such as DoDAF, MODAF, NAF, TOGAF and others
- Support for industry standard patterns such as FEAF 2 and TMForum Framework

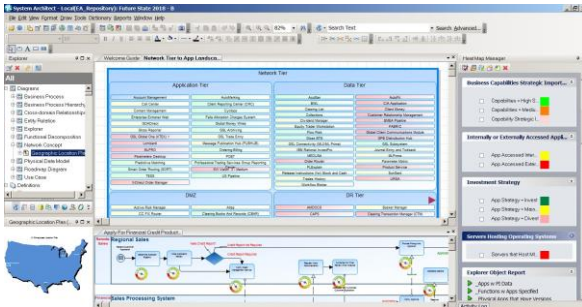
UNICOM® System Architect® is a market-leading enterprise architecture tool that enables you to build and automatically generate data-driven views of your organization's strategy, business model, data, application landscape, supporting technologies, and infrastructure.

Together, these form a mosaic that delivers the insight and analytics necessary to describe current and future states of the enterprise along with interdependencies, risks, life cycles, and standards.

Empowered with this knowledge, your executives, decision makers, and managers can better plan initiatives for improvement, due to a more thorough understanding of the reward, impact, roadmap, and risk of changes. You gain visibility of planned initiatives from the business through operations (BizOps) through solution architecture development, release management, and deployment (DevOps).

With System Architect you can:

- Engineer solutions that support needed business capabilities
- Steer Continuous Business Planning
- Take advantage of disruptive technologies
- Create roadmaps of business transformation
- Plan migration to the cloud



*System Architect enables you to get a 360-degree view of the business, from Capability Maps to Business Processes, to application portfolio heatmaps to roadmaps.*

## TOGAF® and Roadmapping

System Architect's TOGAF 9.1-certified support for The Open Group Architecture Framework (TOGAF®) is widely used in the commercial industry for capturing, analyzing, and architecting all aspects of corporate EA. UNICOM has extended the TOGAF 9.1 metamodel to capture infrastructure and application lifecycles. You can establish timelines of any EA artifact via roadmapping.

## DoDAF 2, NAF, and MODAF

System Architect is a widely used solution for defense architecture frameworks for US Dept of Defense (DoDAF 2), UK Ministry of Defence (MODAF 1.2), and NATO (NAF 3). SA's data-centric support for all views of DoDAF 2 provides ease of use in building and analyzing the architecture. Automation allows generation of inferred views, fit-for-purpose views, and work products.

## FEAF 2

System Architect supports the Federal Enterprise Architecture Framework (FEAF) -- and became the first tool to support FEAF 2 -- which assists U.S. Government departments and agencies in incorporating and using the U.S. Office of Management and Budget (OMB) Reference Models to validate investments.

## Benefits of System Architect

UNICOM System Architect® provides:

- Real-time, multi-user repository with industry-standard database underneath
- Metamodel easily customizable to great depth & breadth
- Reports and analytics built on the fly with easy-to-use reporting interface
- Workspaces to build architecture in layers -- baseline & future state architectures and solution architectures
- Automatic visualization of Cause-Effect & Landscape Heatmap Explorer views
- Support for latest industry standard frameworks and patterns
- SA Publisher add-on to publish architecture to web
- SA XT thin-client for viewing/editing live architecture on web
- SA Simulator add-in for discrete event simulation and optimization of business processes
- SA ERP add-in for examination of ERP systems such as Salesforce.com and SAP, within SA's rich data modeling environment
- Integration to UNICOM Focal Point™ for extended Application Portfolio Management and Decision Analysis
- OSLC integrations to requirements, change management, and other architecture tools

## For More Information

To learn more about UNICOM System Architect®, contact your UNICOM representative or UNICOM Business Partner, or visit the following website:  
[www.unicomsi.com/products/system-architect/](http://www.unicomsi.com/products/system-architect/)

© Copyright UNICOM Systems  
 15535 San Fernando Mission Blvd, Mission Hills, CA 91345; Produced in the United States of America  
 April 2016. All rights reserved. UNICOM Systems and the UNICOM Systems logo are trademarks of UNICOM® Global. All other brands, product names, trade names, trademarks and service marks used herein are the property of their respective owners.